

SUITES



RAFFLES

LONDON





COMMANDER-IN-CHIEF
OF THE BRITISH ARMY
1816-1855
BORN 1816 DIED 1854



01. WELCOME TO RAFFLES	13
02. SIGNATURE SUITES	15
03. HERITAGE SUITES	37
04. SERVICES	65
05. RESTAURANTS & BARS	67
06. GUERLAIN SPA AND HOTEL AMENITIES	71





YOUR *distinguished* LONDON ADDRESS

WELCOME TO RAFFLES LONDON

At Raffles London at The OWO you step into rooms where the history of the 20th century was made, exquisitely modernised for 21st century tastes.

The OWO was once inhabited by Britain's most famous statesmen and spies from Lord Haldane to Sir Winston Churchill. Novelist Ian Fleming, creator of James Bond, took inspiration from the building for his stories, and many of the subsequent Bond movies had scenes filmed in the building.

Today spacious rooms and suites offer an experience of refined contemporary elegance and beauty, uniquely enhanced by their historical features and the remarkable essence of place.

A meticulous eight-year restoration has seen thousands of expert craftsmen and women transform The OWO (formerly Britain's Old War Office) into an exciting new destination for London. Handsome state rooms and grand offices have been transformed into 120 spacious guest rooms and suites with views of Whitehall and Horse Guards; while the building's majestic architectural features lend themselves to dazzling entertainment and celebrations, in true Raffles style.



SIGNATURE *suites*

ALL IN THE DETAIL

Raffles London at The OWO has a total of 54 diverse suites including 15 Junior Suites, many with superb interconnectivity and awe-inspiring views. The most impressive is the unique Whitehall Wing at over 500 sqm and stretching the entire length of the building from turret to turret. Each of the signature suites has a unique story to tell, given their location at one of London's most historically significant addresses. Staying in one of these suites combines the excitement of heritage and authentic architectural detailing with the design flair of the late Thierry Despont and all the modern comforts and services provided by your personal Raffles Butler.



JUNIOR *suite*

A SPACIOUS SENSE OF PLACE

Featuring a spacious seating area and room to relax, these suites have striking works of art and inspiring views of either Horse Guards Avenue, Whitehall Place, the grand Edwardian courtyard or Whitehall. Serene and calm, the Junior Suites are decorated in Edwardian Baroque style, in keeping with the architecture of The OWO.

MAXIMUM 3 GUESTS

1 KING BED OR 2
QUEEN BEDS

53 M² | 548 FT²



WESTMINSTER

suite

A TRIBUTE TO OUR POLITICAL PAST

These beautifully appointed one-bedroom suites are decorated in Edwardian Baroque style and have a separate living room, full ensuite bathroom, dressing area and a small guest bathroom. Bright and airy, the Westminster Suites offer a calm oasis in the heart of the bustling city of London.

MAXIMUM 3 GUESTS

1 KING SIZE BED

64 M² | 688 FT²





MINISTERIAL *suite*

A SPACE OF SPLENDOR

Exquisite décor, a serene bedroom with contemporary art and an exceptionally large living room characterise these sublime suites. Relax in the Edwardian Baroque interiors and enjoy a wonderful sense of space. Each suite also offers a dressing area, ensuite bathroom and a small guest bathroom.

MAXIMUM 3 GUESTS

1 KING BED OR
2 QUEEN BEDS

83 M² | 893 FT²





LIFESTYLE *suite*

A BESPOKE WELLBEING EXPERIENCE

An immersive, high-tech wellbeing experience, with tools for movement, recovery, and nutrition, including a Peloton Bike, yoga equipment, TRX suspension, Normatec recovery boots, weighted blankets, fragrance activated technology, healthy minibar and a dark silent bedroom for a perfect night's sleep.

MAXIMUM 3 GUESTS

1 KING SIZE BED

85 M² | 915 FT²



CORNER *suite*

AN ELEGANT TRIBUTE TO NOTABLE WOMEN

These suites, located below the majestic turrets of The OWO are named after famous women from political and military circles including Clementine Churchill, Christian Lamb, and Lady Astor. Designed with Art Deco accents, these suites have a separate living room including a dining table for six guests and custom-made furniture which recalls the Queen Mary Ocean Liner. Stunning views over Whitehall and Royal Horse Guards.

MAXIMUM 3 GUESTS

1 KING SIZE BED

96 M² | 1432 FT²

HISTORIC WHITEHALL VIEW







HERITAGE *suites*

LUXURY FIT FOR A STATE VISITOR

The five Heritage Suites are much storied rooms which were once offices inhabited by some of Great Britain's leading politicians and military leaders including Lord Haldane, Sir Winston Churchill, and his favourite spy, Christine Granville. Of course, there is the famous Raffles Suite and a stunning elevated Turret Suite. Take up residence in one of these exquisitely reimagined spaces that were once witness to history.

THE TURRET *suite*

A UNIQUE DUPLEX SUITE
LOCATED IN THE ORIGINAL
TURRET

Offering breathtaking views of Whitehall, the official gates to Buckingham Palace at Horse Guards and St James's Park, this two-level suite at the top of an iconic turret has a lower floor bedroom and bathroom and an exceptional living room above.

MAXIMUM 3 GUESTS

1 KING SIZE BED

86 M² | 926 FT²

PANORAMIC CITY VIEW





THE RAFFLES *suite*

A NOD TO OUR RICH ASIAN HERITAGE

Named after Sir Stamford Raffles, founder of modern Singapore, this historic suite retains original fireplaces, rich wood panelling and beautifully restored antique stucco work. With interiors reminiscent of old Asia, including bespoke bathrooms and custom-made silk wall coverings, this one- or two-bedroom suite overlooks the peaceful Edwardian inner courtyard.

MAXIMUM 4 GUESTS

2 KING SIZE BEDS

170 M² | 1884 FT²

EDWARDIAN COURTYARD VIEW





THE GRANVILLE *suite*

AN EVOCATIVE GRAND HERITAGE SUITE

Named after Christine Granville, rumoured to be Churchill's favourite spy, this grand one-bedroom suite must be seen to be believed. Rich wood panelling, giant oak casement windows, ornate plasterwork, antique fireplaces, and a truly breathtaking, one-of-a-kind bathroom.

MAXIMUM 3 GUESTS

1 KING SIZE BED

162 M² | 1744 FT²

HISTORIC CITY VIEW







THE CHURCHILL *suite*

THE MOST HISTORICALLY
SIGNIFICANT ROOM AT
THE OWO

Named after the former Prime Minister, this exceptionally grand and historically significant one-or two-bedroom suite was the centre of operations for Britain's military leaders during the Second World War. With an awe-inspiring ceiling, rich wood panelling, grand fireplaces and floor to ceiling windows, this unique suite enjoys views over Horse Guards Avenue and Banqueting House, one of the only surviving parts of King Henry VIII's Whitehall Palace.

MAXIMUM 4 GUESTS

2 KING SIZE BEDS

190 M² | 2045 FT²

HISTORIC CITY VIEW







THE HALDANE *suite*

THE FORMER OFFICE
OF LORD HALDANE AND
SIR WINSTON CHURCHILL

This spectacular one- or two-bedroom suite was once the office of War Secretary Lord Haldane and Sir Winston Churchill. With prime views over Whitehall and Horse Guards Parade, this suite is rich in architectural detail including wood panelling and original antique fireplaces and is graced with stunning chandeliers and floor to ceiling windows.

MAXIMUM 4 GUESTS

2 KING SIZE BEDS

250 M² | 2691 FT²

WHITEHALL VIEW





THE WHITEHALL *wing*

AN EXPANSIVE AND
ELEGANT SIX-BEDROOM
SUITE OVERLOOKING
HISTORIC WHITEHALL

The Whitehall Wing occupies the entire west wing of the second floor overlooking Whitehall, to form a six-bedroom, 500 sqm residence, one of the largest hotel wings available in London. The heart of this Wing is the historical Haldane Suite, formerly the office of Sir Winston Churchill. There are also two art deco style Corner Suites, a Junior Suite, and two Deluxe Rooms, all with panoramic views.

12 GUESTS

6 KING SIZE BEDS

500 M² | 5382 FT²





AT YOUR *service*

Ever since the first Raffles Hotel opened in Singapore in 1887, the Raffles name has been synonymous with legendary service, glamour, cultural heritage, and elegant exploration. Each Raffles hotel provides world-class accommodations in its luxury rooms and suites, enhanced by the charming Raffles Butlers who are honoured to be your loyal companions throughout your stay. Always available and always discreet, Raffles Butlers anticipate your every need and are devoted to your comfort.

A NEW *culinary* DESTINATION

Discover a vibrant, diverse, and sociable destination for dining and imbibing. A crucible for the best cuisines in the world, each expertly brought to life by masters of the culinary craft.



The OWO is a new culinary destination in London with nine restaurants and three bars to choose from, offering a wide range of international cuisines including French, Italian and Japanese. Enjoy roof top dining with extraordinary panoramic views over Central London or relax in the historical inner courtyard with both indoor and outdoor dining options. At Raffles London, you can also choose Mauro Colagreco at Raffles London at The OWO, an elevated dining experience which showcases hyper-local, seasonal, and eco-sourced ingredients;

Saison by Mauro Colagreco for relaxed Mediterranean dining; or Mauro's Table, a Chef's Table offering an intimate and bespoke tasting experience. The Drawing Room is a classically British and deeply comfortable lounge serving light fare and Raffles Afternoon Tea while Pillar Kitchen is a beautiful light-filled room focused on nutritious food and drink to eat in or take away. And finally, there is the elegant Guards Bar and Lounge for Champagne, cocktails and spirited tipples and the subterranean speakeasy, The Spy Bar – yours to discover.





RELAX & *recover*



Within the serenely restorative spa and contemporary fitness spaces at Raffles London at The OWO, the prized treatment expertise of Guerlain Paris meets the movement, recovery and nutrition skills of Pillar Wellbeing, for a game-changing holistic wellness offering. Spanning 2,508 sqm over four floors, the Guerlain Spa offers profoundly calming and secluded spaces in which to escape from the demands of a busy modern life.

Step out restored and renewed after luxuriating in the pools or sauna; or indulge in a spa treatment in one of the VIP suites. Pillar Wellbeing oversees training and health programming in the state-of-the-art Technogym, and movement studio.

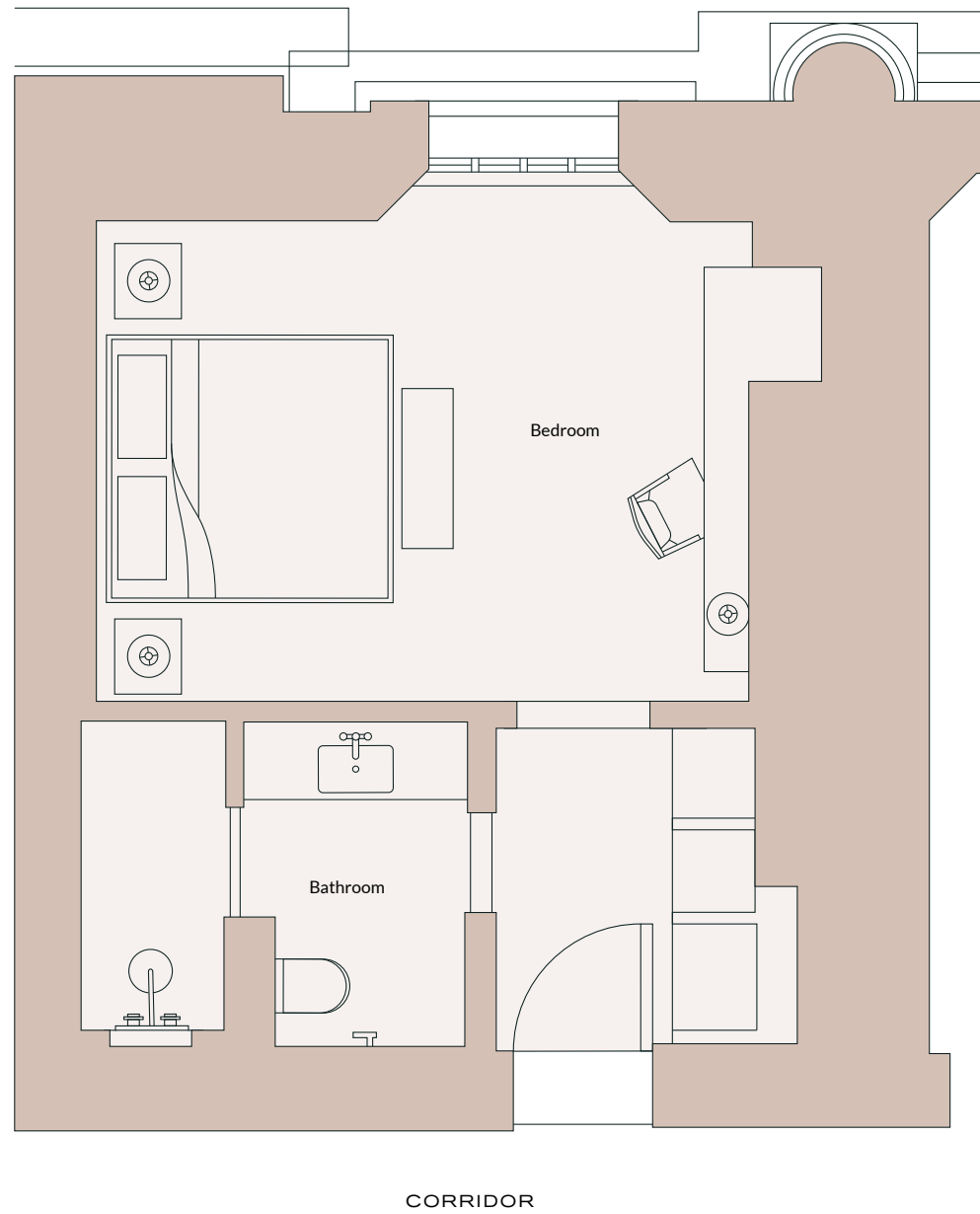




FLOOR *plans*

JUNIOR *suite*

1 BEDROOM CONFIGURATION

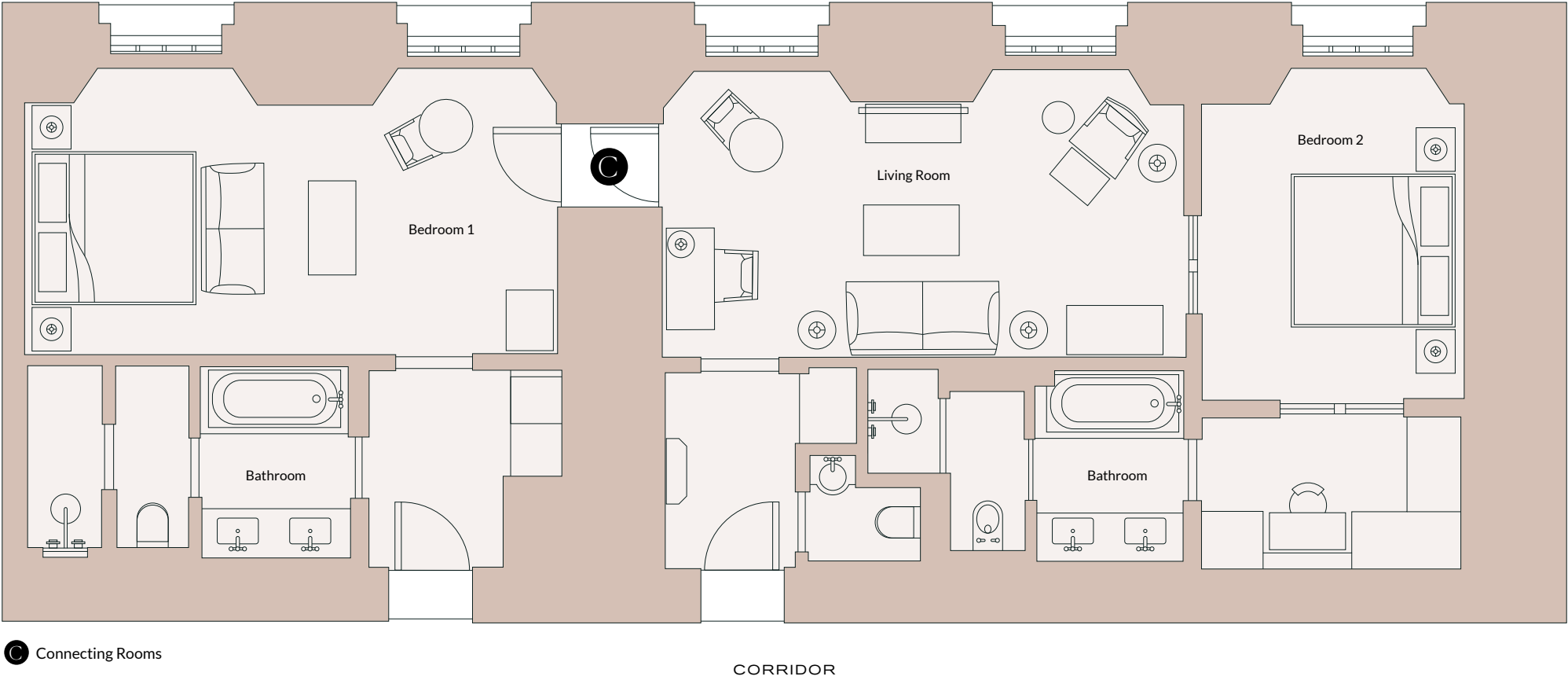


Specifications
1 Bed | 1 Bath
53 sqm | 548 sqft

Disclaimer: Any areas, measurements or distances referred to herein are approximate only. Layouts are for guidance only and are not necessarily comprehensive.

WESTMINSTER *suite* & DELUXE *twin*

3 BEDROOM CONFIGURATION

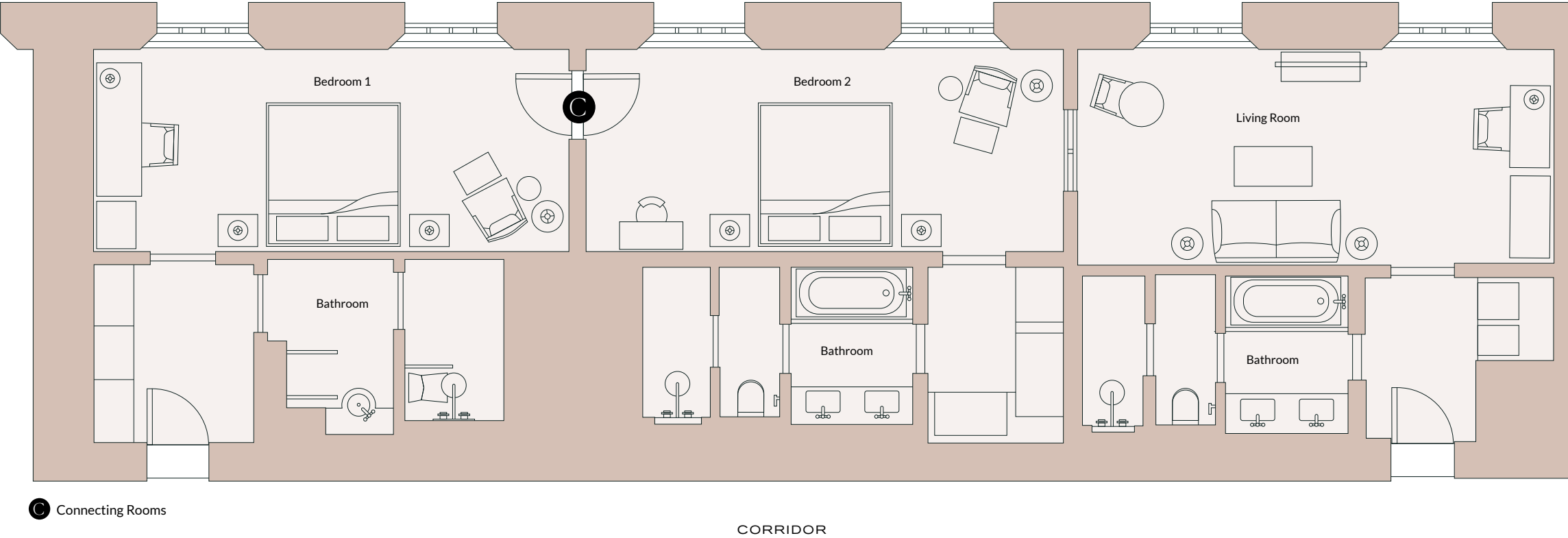


Specifications
2 Bed | 2 Bath | 1 Living
109 sqm | 1173 sqft

Disclaimer: Any areas, measurements or distances referred to herein are approximate only. Layouts are for guidance only and are not necessarily comprehensive.

MINISTERIAL *suite*

2 BEDROOM CONFIGURATION

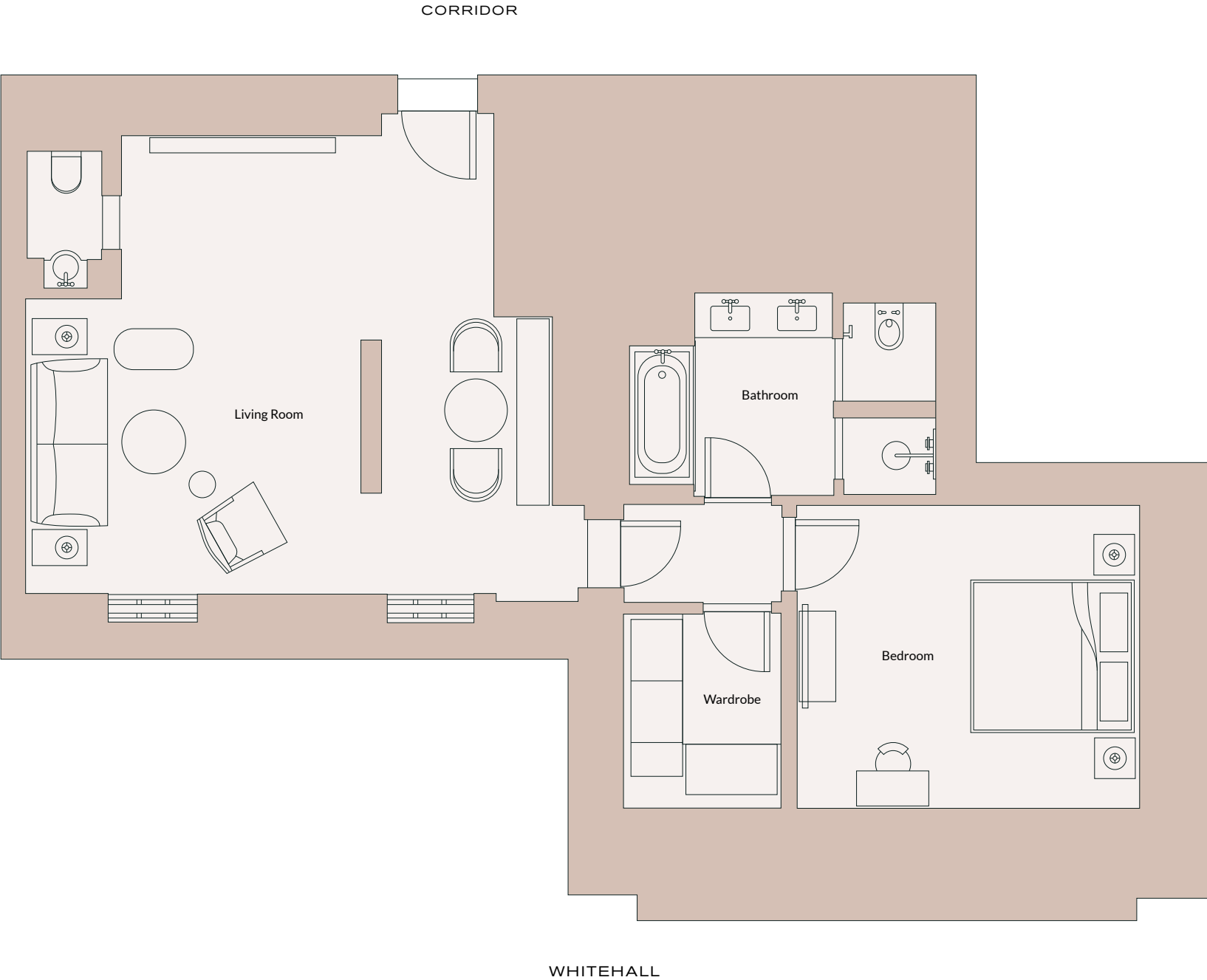


Specifications
2 Bed | 3 Bath | 1 Living
127 sqm | 1367 sqft

Disclaimer: Any areas, measurements or distances referred to herein are approximate only. Layouts are for guidance only and are not necessarily comprehensive.

LIFESTYLE *suite*

1 BEDROOM CONFIGURATION



Specifications
1 Bed | 1 Bath | 1 Living | 1 Guest Toilet
85 sqm | 915 sqft

Disclaimer: Any areas, measurements or distances referred to herein are approximate only. Layouts are for guidance only and are not necessarily comprehensive.

CORNER *suite*

2 BEDROOM CONFIGURATION

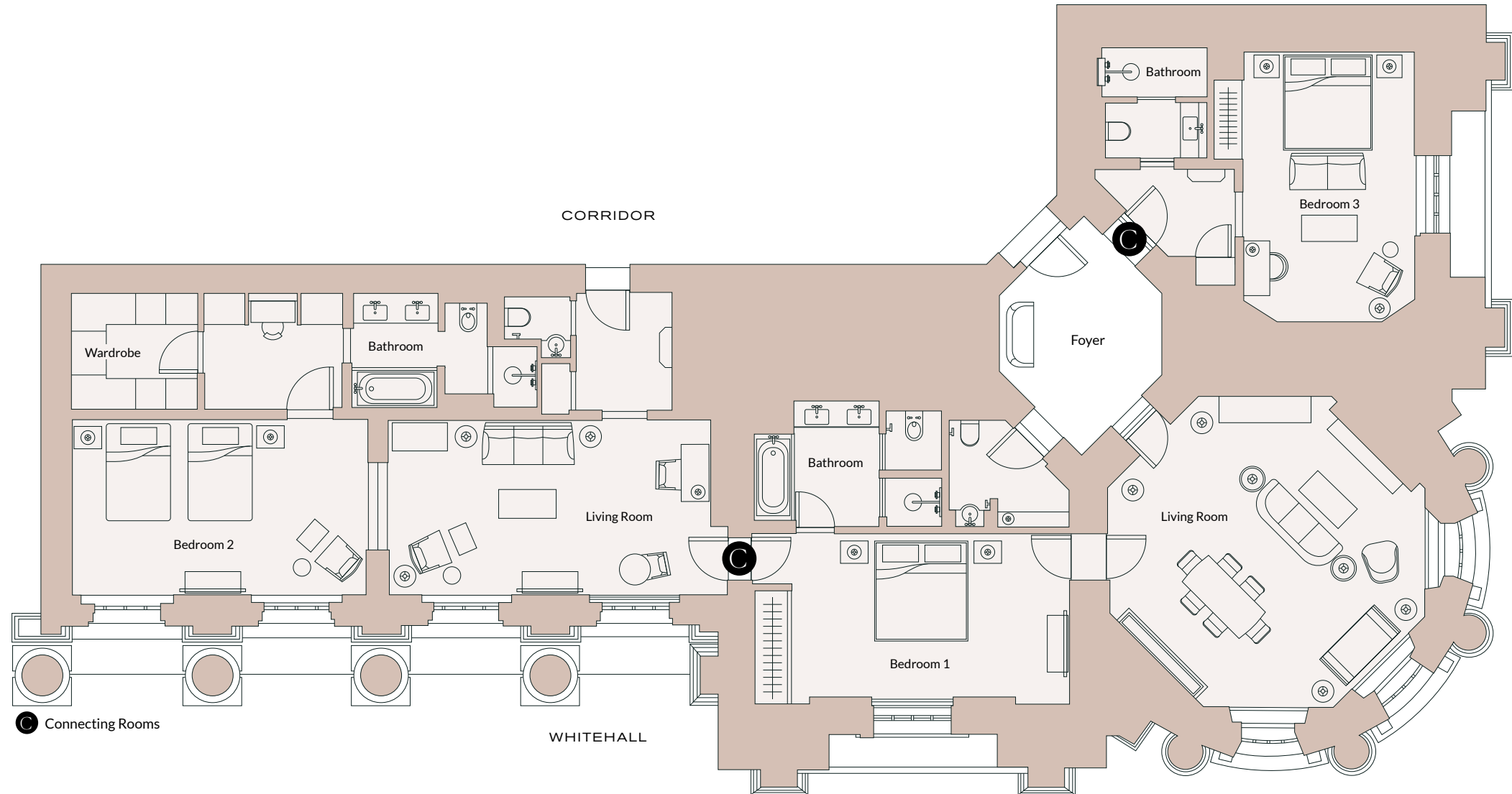


Specifications
2 Bed | 2 Bath | 1 Living | 1 Guest Toilet
133 sqm | 1432 sqft

Disclaimer: Any areas, measurements or distances referred to herein are approximate only. Layouts are for guidance only and are not necessarily comprehensive.

CORNER *suite* & MINISTERIAL *suite*

3 BEDROOM CONFIGURATION

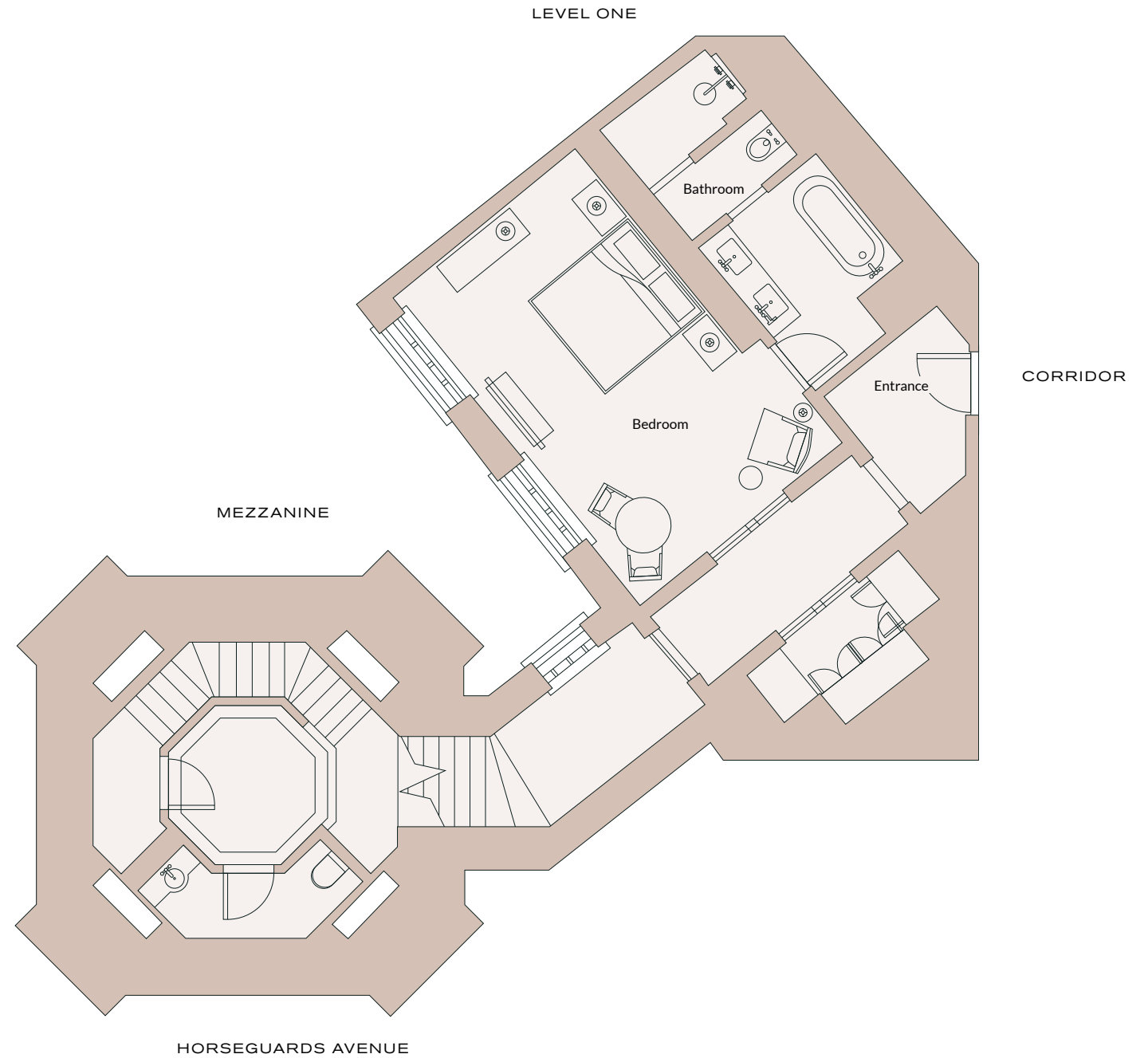
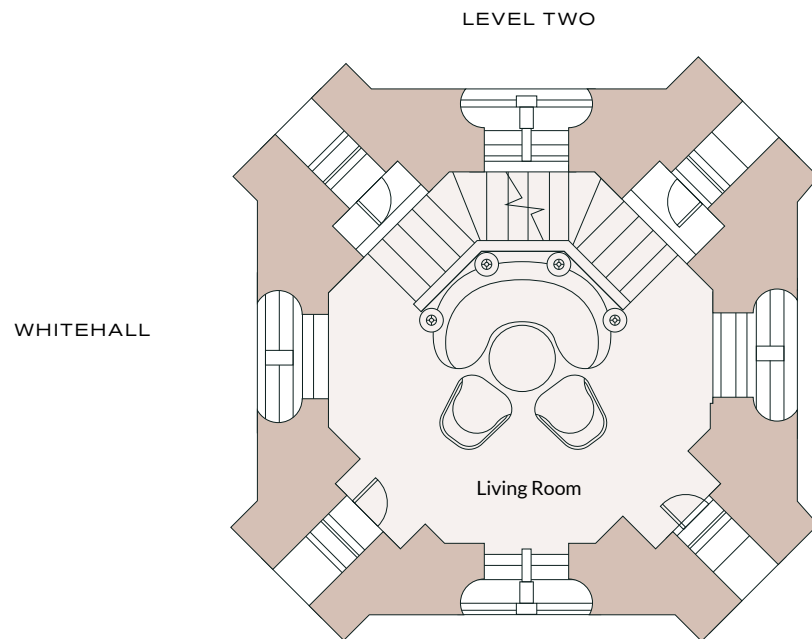


Specifications
3 Bed | 3 Bath | 2 Living | 2 Guest Toilets
217 sqm | 2336 sqft

Disclaimer: Any areas, measurements or distances referred to herein are approximate only. Layouts are for guidance only and are not necessarily comprehensive.

THE TURRET *suite*

1 BEDROOM CONFIGURATION



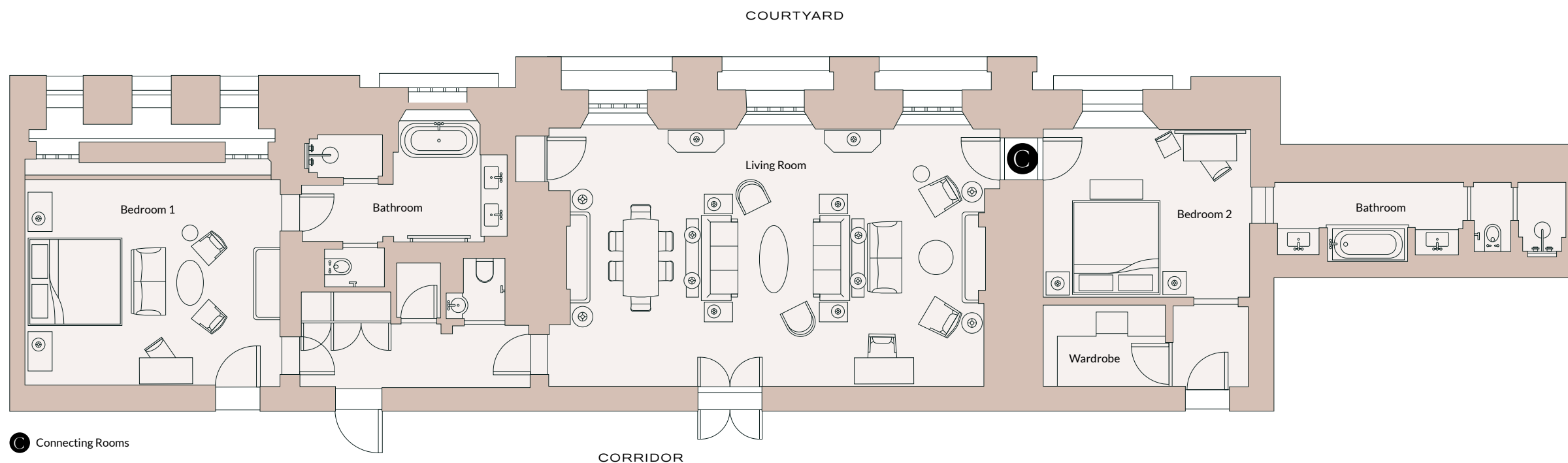
Specifications
1 Bed | 1 Bath | 1 Living | 1 Guest Toilet
86 sqm | 926 sqft

Disclaimer: Any areas, measurements or distances referred to herein are approximate only. Layouts are for guidance only and are not necessarily comprehensive.



THE RAFFLES *suite*

2 BEDROOM CONFIGURATION



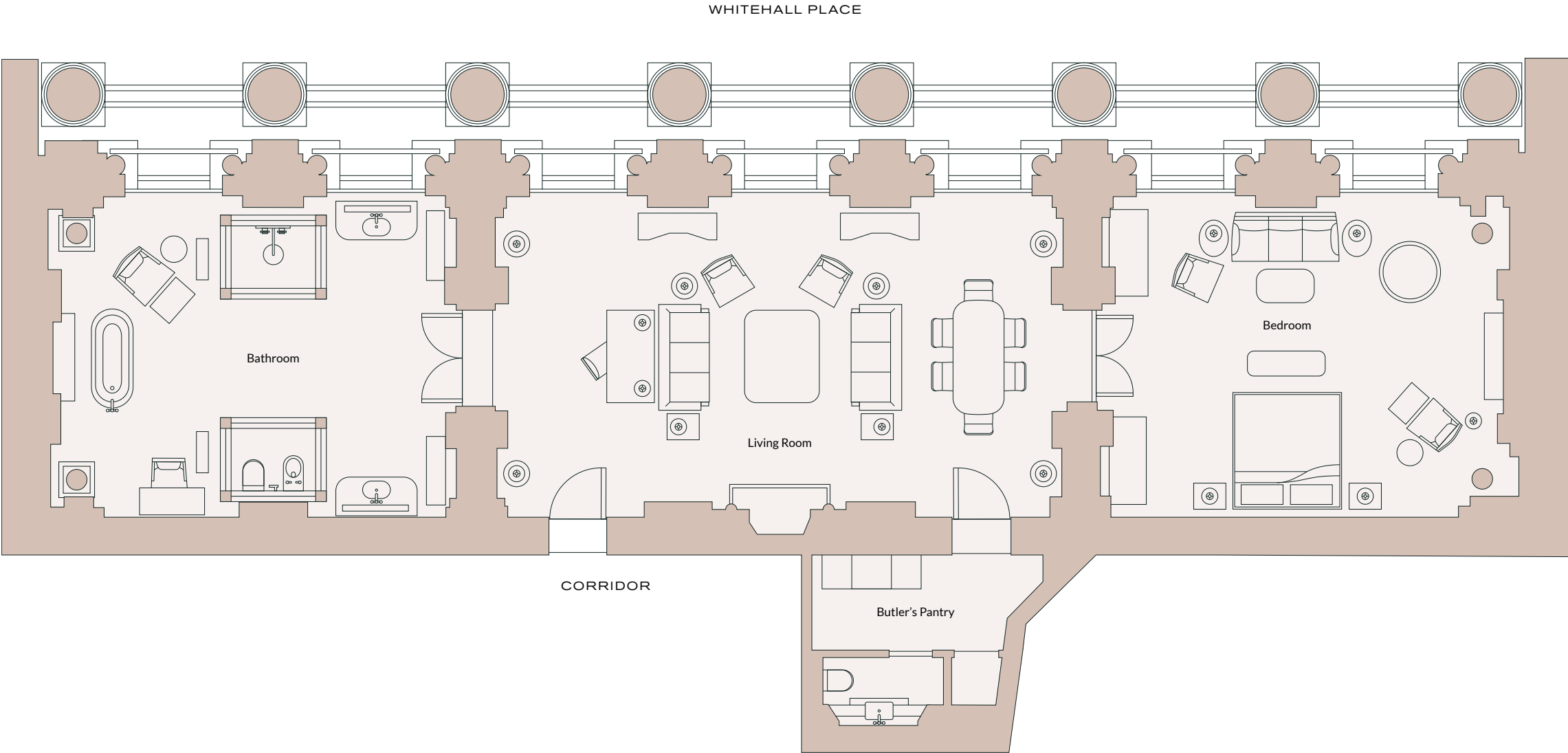
Specifications
2 Bed | 2 Bath | 1 Living | 1 Guest Toilet
175 sqm | 1884 sqft

Disclaimer: Any areas, measurements or distances referred to herein are approximate only.
Layouts are for guidance only and are not necessarily comprehensive.



THE GRANVILLE *suite*

1 BEDROOM CONFIGURATION



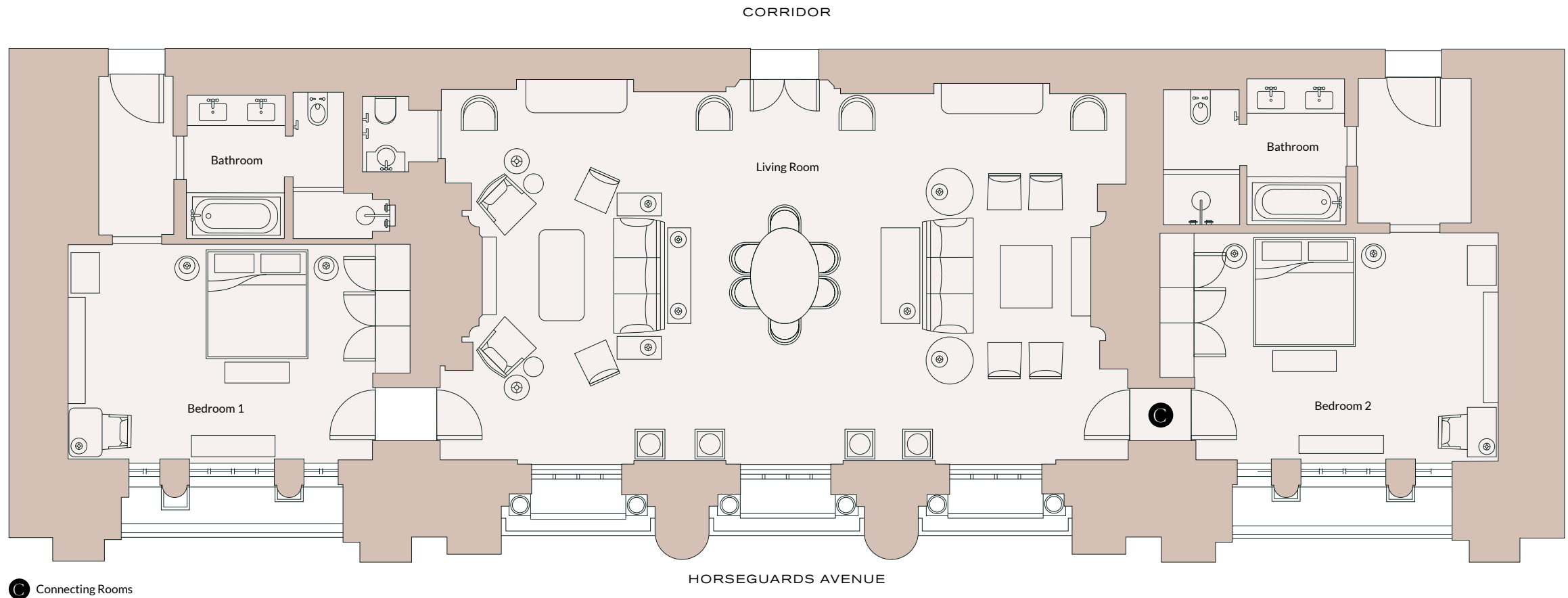
Specifications
1 Bed | 1 Bath | 1 Living | 1 Guest Toilet
162 sqm | 1744 sqft

Disclaimer: Any areas, measurements or distances referred to herein are approximate only.
Layouts are for guidance only and are not necessarily comprehensive.



THE CHURCHILL *suite*

2 BEDROOM CONFIGURATION



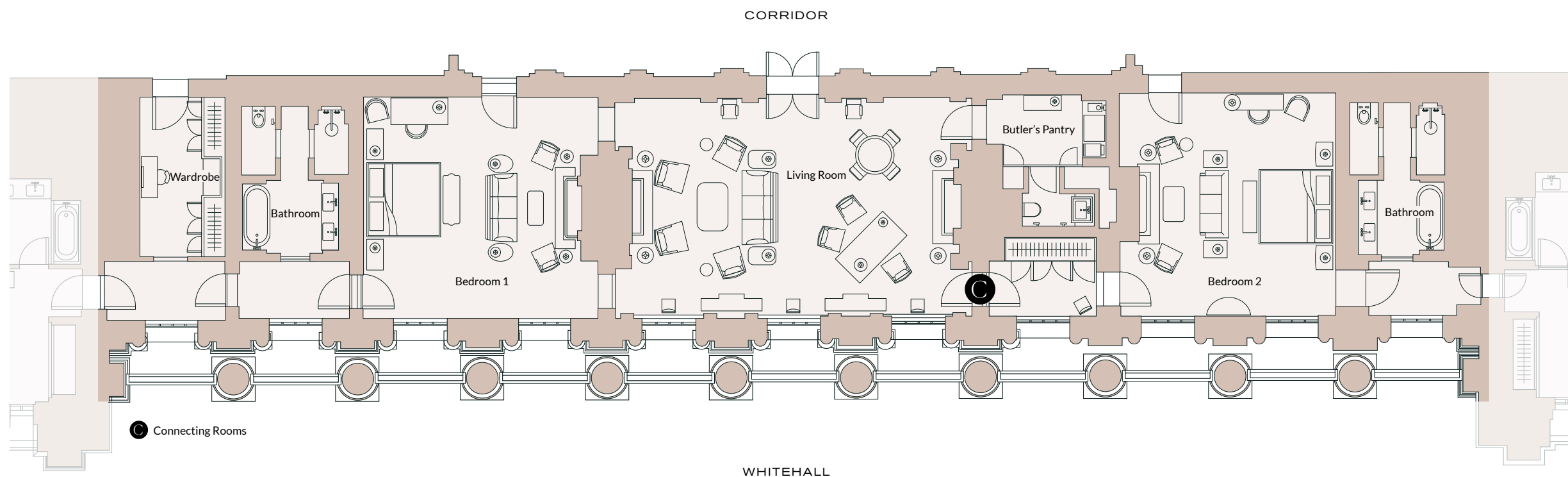
Specifications
2 Bed | 2 Bath | 1 Living | 1 Guest Toilet
190 sqm | 2045 sqft

Disclaimer: Any areas, measurements or distances referred to herein are approximate only.
Layouts are for guidance only and are not necessarily comprehensive.



THE HALDANE *suite*

2 BEDROOM CONFIGURATION



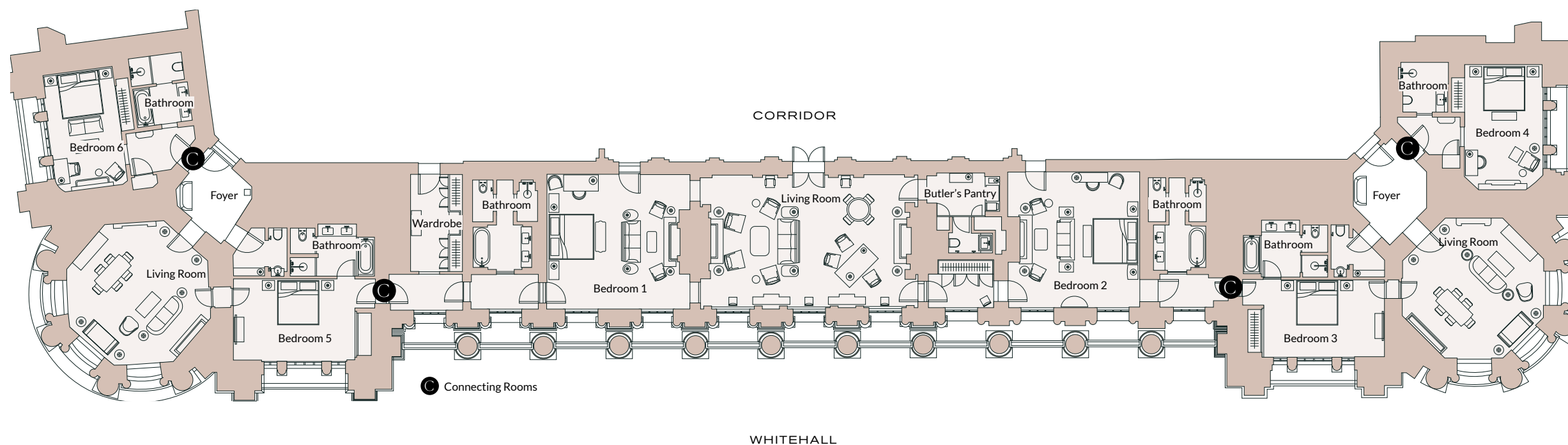
Specifications
2 Bed | 2 Bath | 1 Living | 1 Guest Toilet
250 sqm | 2691 sqft

Disclaimer: Any areas, measurements or distances referred to herein are approximate only.
Layouts are for guidance only and are not necessarily comprehensive.



THE WHITEHALL *wing*

6 BEDROOM CONFIGURATION



Specifications

6 Bed | 6 Bath | 3 Living | 3 Guest Toilets
500 sqm | 5382 sqft

Disclaimer: Any areas, measurements or distances referred to herein are approximate only.
Layouts are for guidance only and are not necessarily comprehensive.



GET IN TOUCH

Tel: (44) 20 3907 7500
Email: London@Raffles.com
Address: Raffles London at The OWO,
57 Whitehall, London SW1A 2BX,
United Kingdom.
Social: [@RafflesLondon.TheOWO](https://www.instagram.com/RafflesLondon.TheOWO)

Raffles London at The OWO occupies a magnificent Grade II* Edwardian Baroque building in Whitehall, the epicentre of British Government. A sophisticated neighbourhood with a central location, Whitehall is close to Waterloo and Charing Cross train terminals, and accessible however you choose to arrive. The River Thames, Horse Guards Parade, Buckingham Palace, St James's Park, the Houses of Parliament, and Westminster Abbey are all within walking distance, and the West End theatres and the nightlife of Covent Garden and Soho are only a heartbeat away.

THE
OWO